

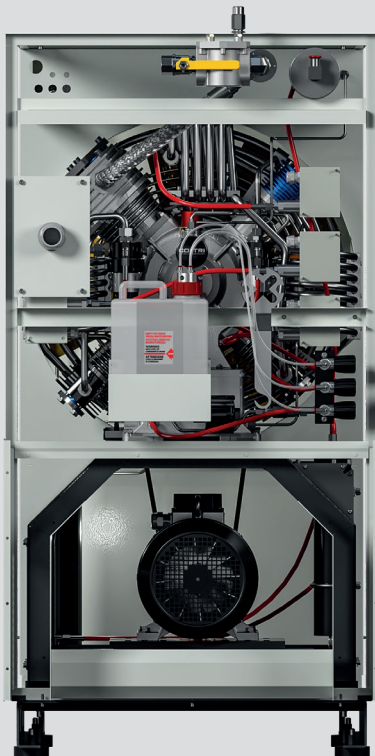
CNG line  
**CNG HD**  
Electric



CONTACT US

CERTIFICATION: CE UNI EN ISO 9001:2015





## Technical data

Type of gas	Natural gas - methane
Intake pressure	Max 200 mbar
Nominal pressure	250 bar
Filling pressure	200 bar or 250 bar
Max working pressure	200 bar or 250 bar
Permissible ambient temperature range	-10° C ÷ +40° C
Permissible altitude	0 ÷ 1.500 m SLM
Max permissible tilt	15°
Design	Silenced
Operating voltage, standard	400 V; 50 Hz
Other operating voltage	230 V, 50 Hz / 230 V, 60 Hz / 400 V, 60 Hz
Oil	Synthetic Coltri Oil ST 755
Oil change interval	Every year / 1.000 h
Frame	Steel 1,5 mm thickness - colour RAL 7035 - RAL 7016 Powder coating painting - scratch proof
Noise	LpA 66 dB

## Compressor

	CNG HD 330 ET	CNG HD 400 ET	CNG HD 550 ET
Charging rate	330 l/min	400 l/min	550 l/min
Purification System	Hyperfilter		
Cooling air flow, min.	3000 m <sup>3</sup> /h		
Weight	451 kg 994 lb	455 kg 1003 lb	463 kg 1020 lb
<small>Standard model. Weight and dimensions may vary depending on accessories.</small>			
Dimensions (W x D x H)	79 x 130 x 155 cm - 31 x 54 x 61 in		

## Engine

	CNG HD 330 ET	CNG HD 400 ET	CNG HD 550 ET
Type	Three-phase el.		
Power	9 kW – 12 Hp	11 kW – 15 Hp	15 kW – 20 Hp
Operating voltage/frequency	400/690 V, 50 Hz		
<small>Different voltage / frequency available on request.</small>			
Rated current	13,2 A		
Speed (RPM)	1.050 1/min	1.250 1/min	1.420 1/min
Protection class	IP55 (TEFC)		

## Dimensioni

Width 79 cm (31")

Depth 130 cm (54")

Height 155 cm (61")

## Dry weight

**CNG HD 330 ET**

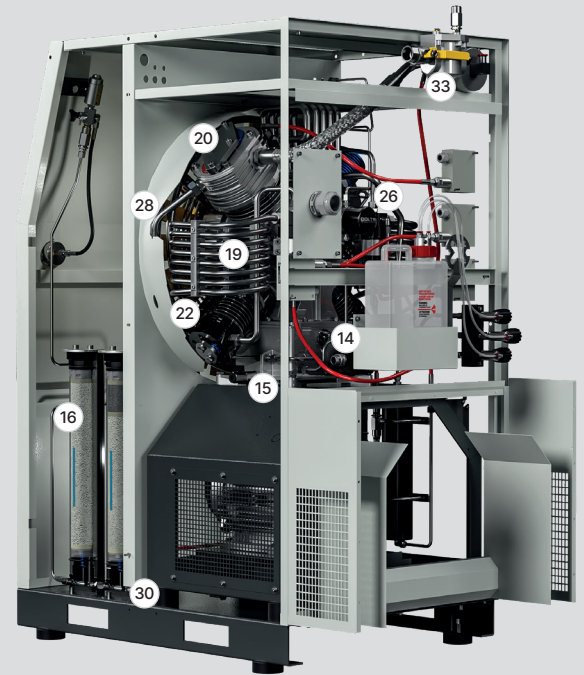
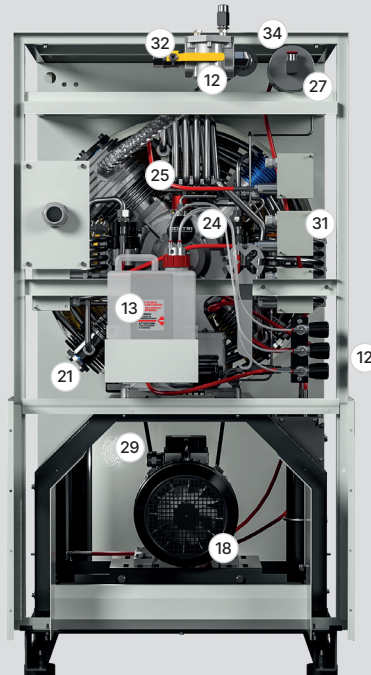
451 kg (994 lb)

**CNG HD 400 ET**

455 kg (1003 lb)

**CNG HD 550 ET**

463 kg (1020 lb)

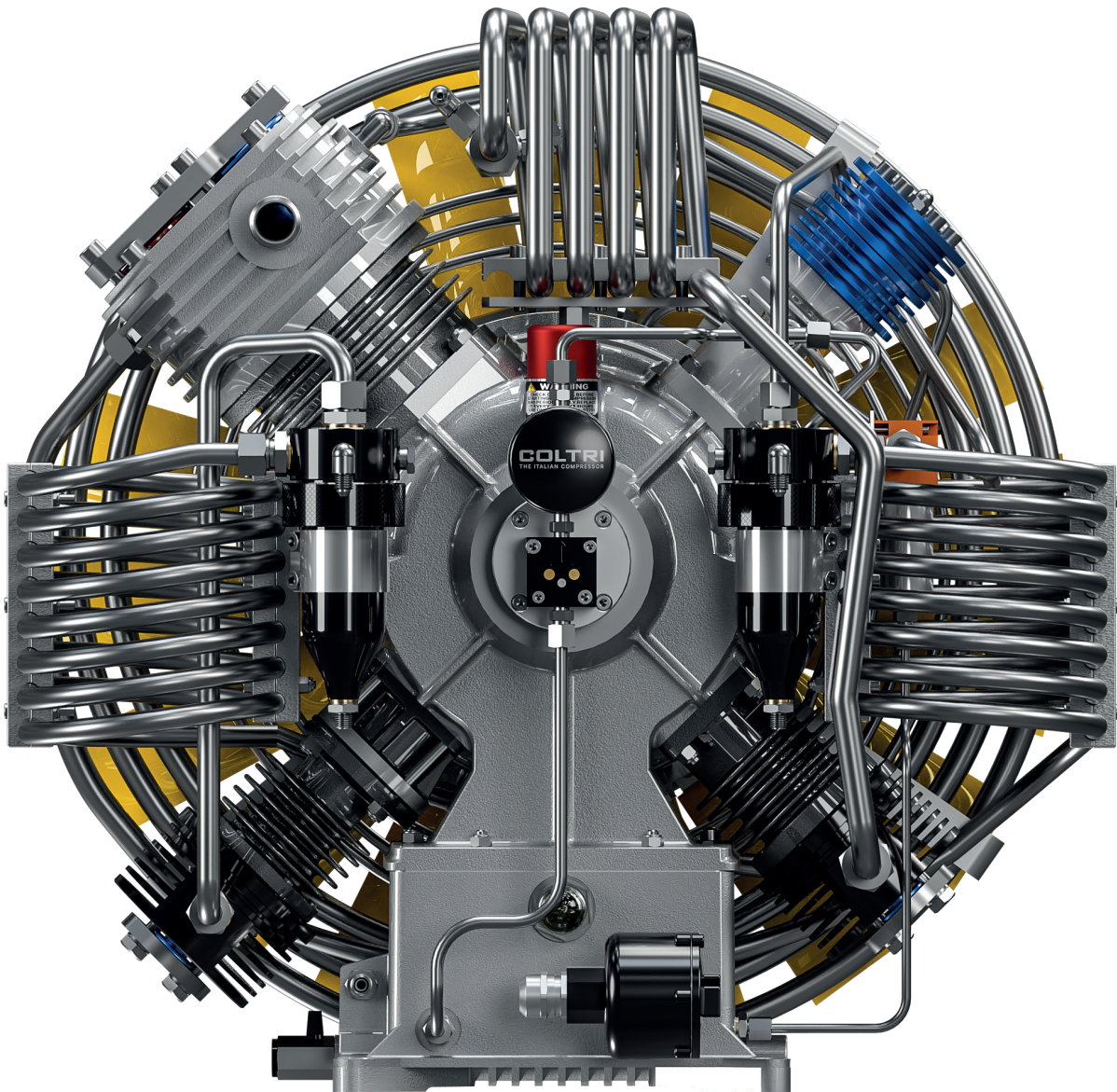


## Machine parts

- 1 Frame
- 2 Control panel
- 3 Selector switch ON/OFF
- 4 ON pushbutton
- 5 Stop pushbutton
- 6 Emergency pushbutton
- 7 Hour counter
- 8 Thermostat
- 9 Gases pressure gauge
- 10 Oil pressure gauge
- 11 High pressure gas outlet connection
- 12 Condensate discharge valve

- 13 Condensate collection can
- 14 Oil level
- 15 Oil discharge valves
- 16 Molecular sieve gases filteri
- 17 ATEX motor
- 18 Compressor
- 19 Gas suction filter
- 20 1<sup>st</sup> stage gas recovery
- 21 2<sup>nd</sup> stage
- 22 3<sup>rd</sup> stage
- 23 4<sup>th</sup> stage
- 24 Monobloc

- 25 Oil filler plug
- 26 Oil filter
- 27 Safety valves
- 28 Antistatic cooling fan
- 29 Antistatic belt
- 30 Anti-vibration device
- 31 Pressure switches
- 32 Gas aspiration connector
- 33 Manifold safety valves
- 34 Fireplace exhaust gas



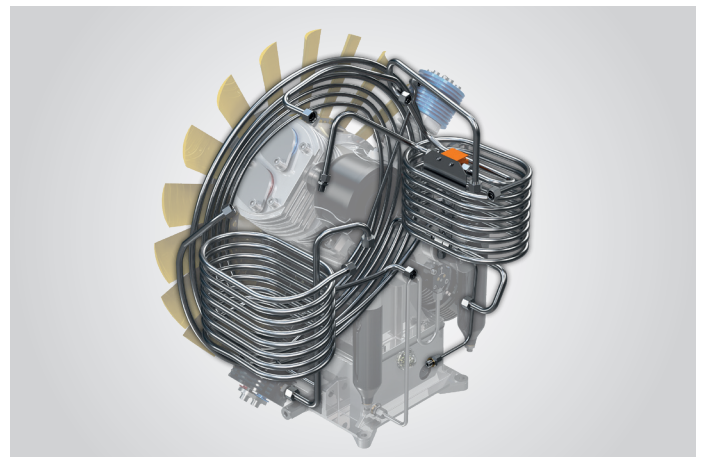
## 1. Forced lubrication with low pressure gear pump



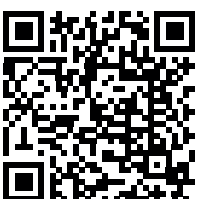
## 2. Inlet filter



## 3. Pipes, fittings and nuts in stainless steel AISI 316

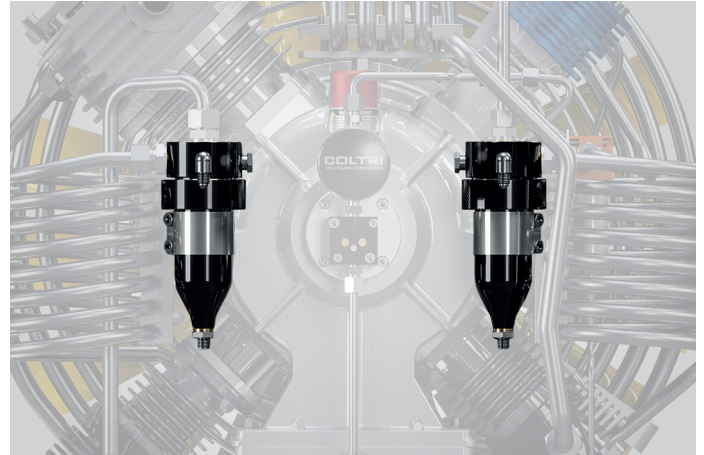


## 4. Synthetic oil with special formulation for CNG compressor

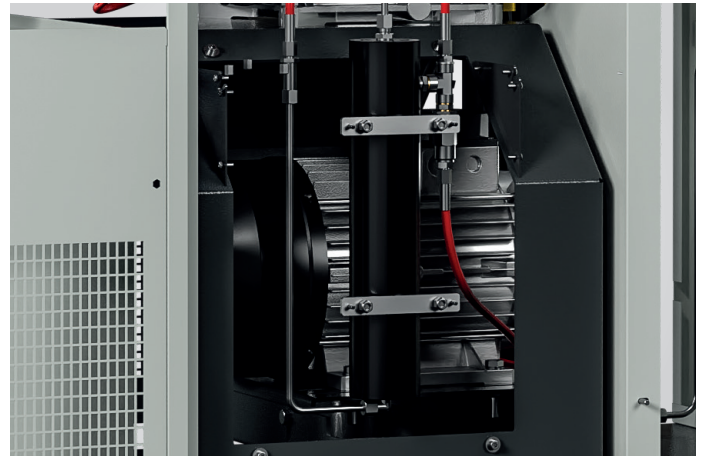


Discover more on Coltri Oil ST 755

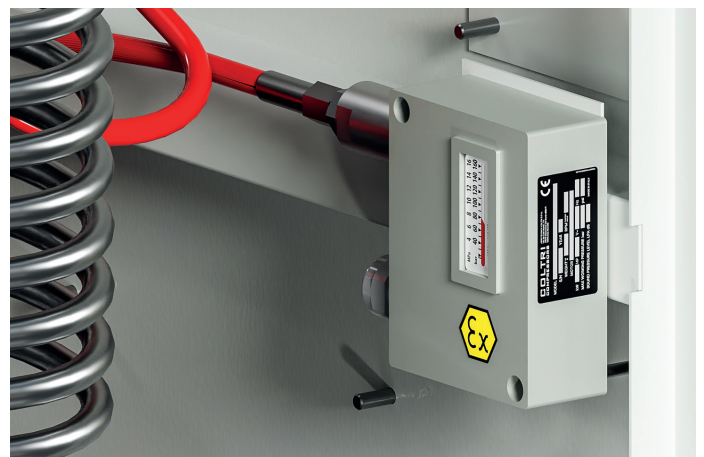
## 5. Intermediate condensate separator after the second stage



## 6. High pressure final condensate separators double effect



## 7. Pressure switches valves after each stage of compression



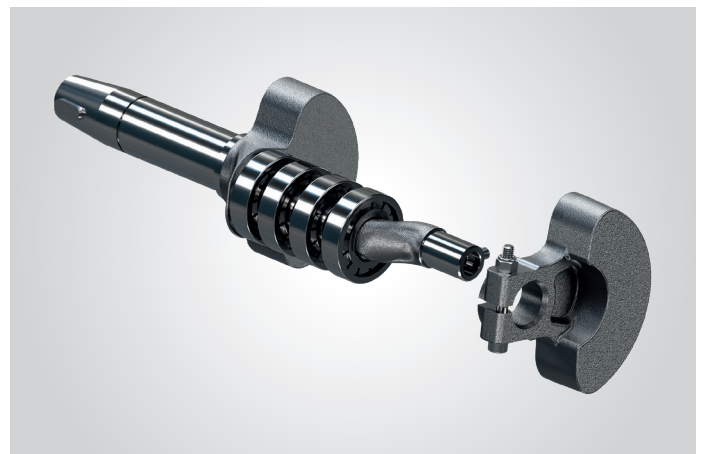
**8.**  
Special cast iron cylinders  
with low roughness  
lapping



**9.**  
Forged aluminum  
connecting rods

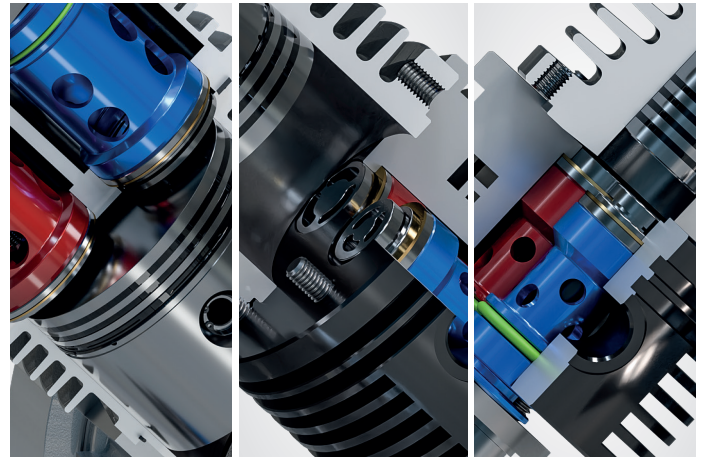


**10.**  
Crankshaft  
forged steel

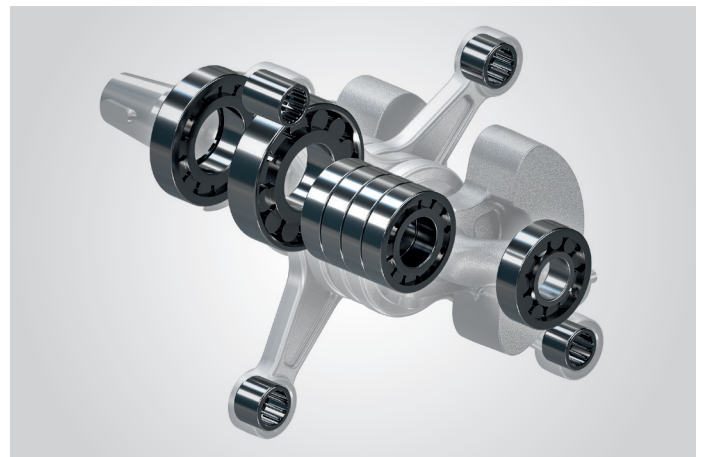




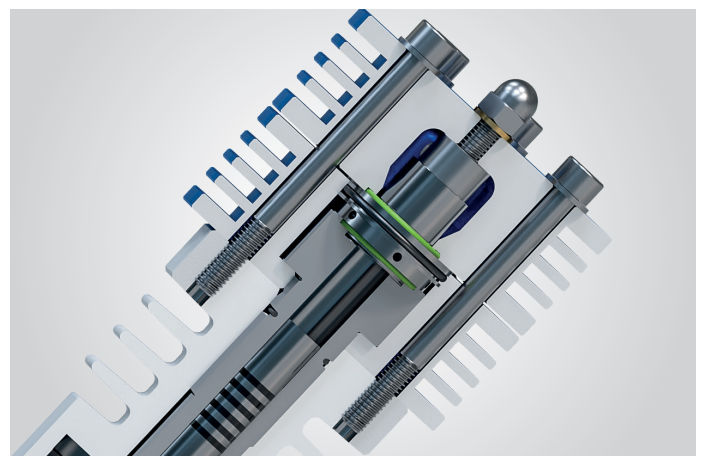
## 11. High-flow first, second and third stage valves



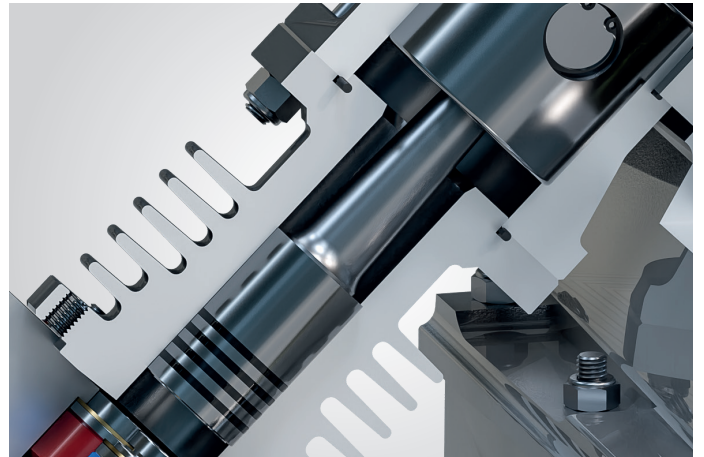
## 12. Roller Bearings for intensive work



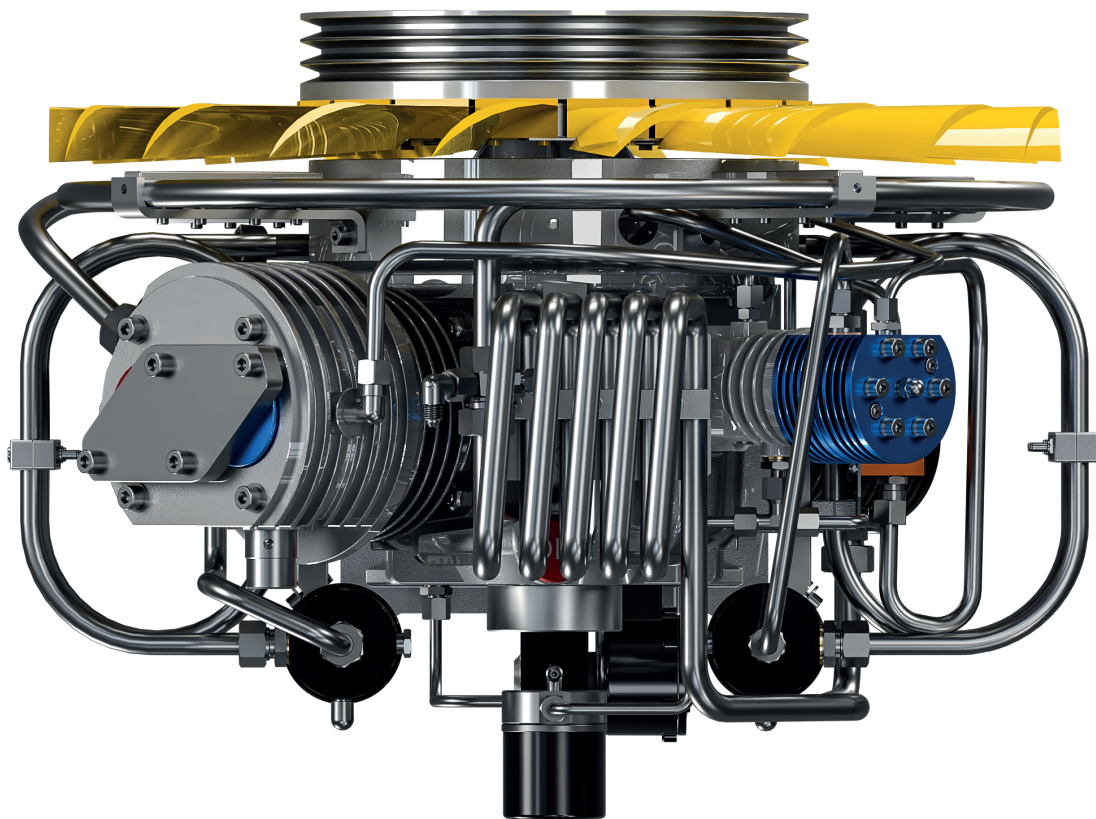
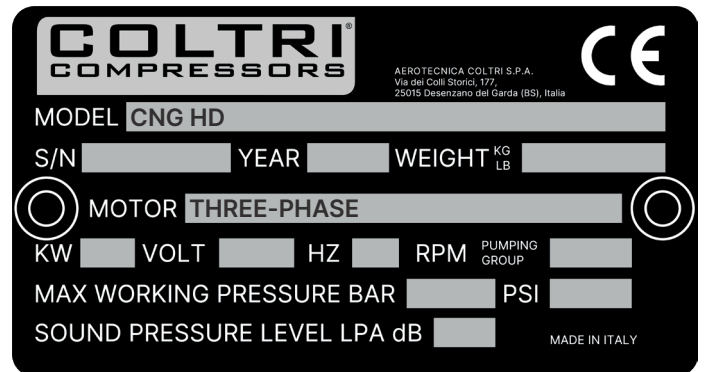
## 13. Fourth stage in tempered steel with 6 segments in special cast iron



**14.**  
 Second and third stage  
 with pushing pistons  
 to eliminate lateral forces  
 on the pistons

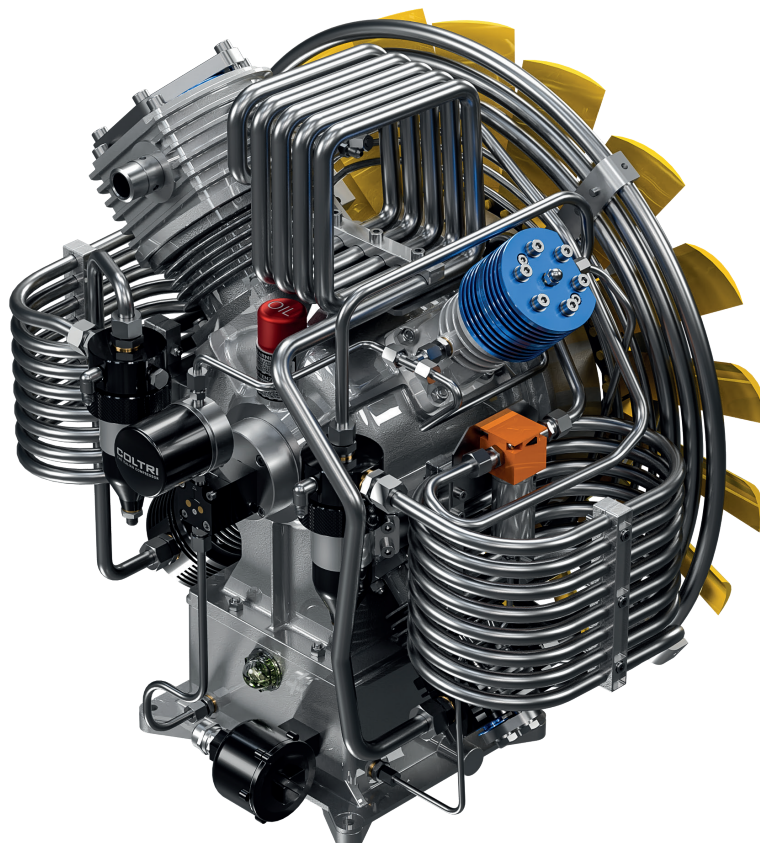


**15.**  
 Label  
 CE certification



# Compressor block

	MCH 20 ET	MCH 24 ET	MCH 34 ET
	CNG HD 330 ET	CNG HD 400 ET	CNG HD RC 550 ET
<b>Charging rate</b> Measured during 10 liters cylinder filling from 0-200 bar tolerance +/- 5% at + 20 ° C ambient temperature.	330 l/min	400 l/min	550 l/min
<b>Speed RPM</b>	1.050 1/min	1.250 1/min	1.420 1/min
<b>Intake pressure</b>	From 17 to 200 mbar		
<b>Number of stages</b>	4		
<b>Number of cylinder</b>	4		
<b>Cylinder bore 1st stage</b>	130 mm		
<b>Cylinder bore 2nd stage</b>	60 mm		
<b>Cylinder bore 3rd stage</b>	32 mm		
<b>Cylinder bore 4th stage</b>	15 mm		
<b>Stroke</b>	50 mm		
<b>Direction of rotation (from flywheel side)</b>	Left - counter clockwise		
<b>Drive type</b>	V-belt A type		
<b>Intermediate pressure 1st stage</b>	~ 3,2 bar		
<b>Intermediate pressure 2nd stage</b>	~ 16 bar		
<b>Amount of oil</b>	4 litri		



# Standard equipment

## Inlet filter



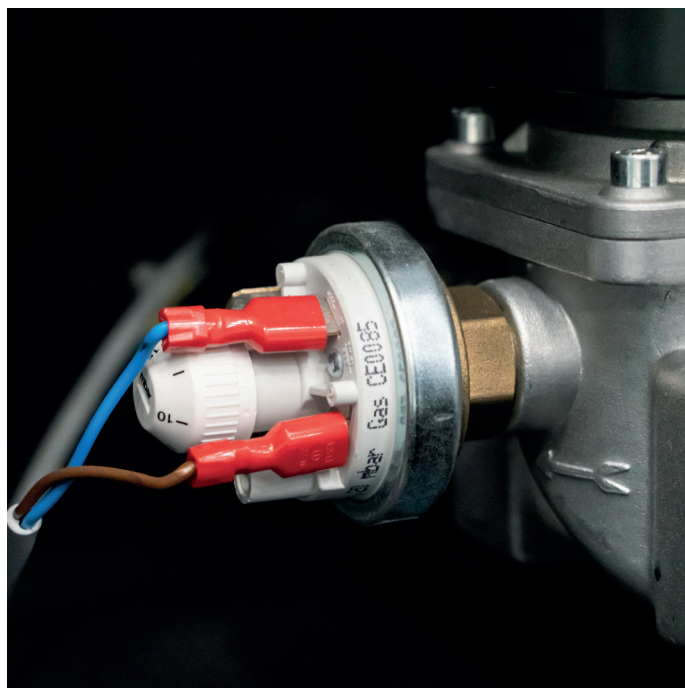
## Natural gas refueling gun with direct action NGV1



## 4.5 m filling hose



## Low pressure switch at the gas inlet



# Purification system HYPERFILTER

DOUBLE HYPERFILTER regenerable or disposable cartridge


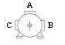



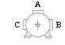
**COD. 36-07-034/PP/CNG/1**

Purification system	Hyperfilter x 2
Operating pressure (Standard)	200 bar / 250 bar
Operating pressure max. (PS)	420 bar
Processable air capacity (air inlet temperature in the filter 20° C at 300 bar)	3.050 m <sup>3</sup>



Data sheet three-phase electric motor 9 kW

Data sheet three-phase electric motor 11 kW

		SPECIFICA TECNICA MOTORE EL. Electric motor technical data sheet		Potenza/ Power (kW)	Poli/ Poles
				9	2
		Data 25/06/2015		Rev. 0	
No	Descrizione/Description	Dati/Data			U.d.m.
1	Codice Soga / ref. code	150779			
2	Modello / Motor type	MT1 132MB/2			
3	Descrizione / Description	Three-phase asynchronous motor 9kW 2 Poles 400/690V 50Hz			
4	Carcassa motore / Framesize	132M			
5	Poli / Poles	2			
6	Forma di costruzione / Mounting type	IM B3			
7	Potenza nominale / Rated output	9	9	10,5	[kW]
8	Fattore di servizio / Service factor	1,0			
9	Tipo di servizio / Duty type	S3-75%			
10	Tensione / Rated voltage	400/690	400/690	Δ440-480	[V]
11	Frequenza / Rated frequency	50	60	60	[Hz]
12	Corrente nominale / Rated current	18,8/11	18,8/11	18,8	[A]
13	Velocità nominale / Rated speed	2880	3450	3450	[min <sup>-1</sup> ]
14	Fattore di potenza / Power factor	0,87	0,87	0,87	
15	Coppia nominale motore / Rated motor torque	29,8	24,9	29,1	[Nm]
17	Corrente avviamento / Corrente nominale Starting current / Rated current	6,3			Isp/In
18	Coppia avviamento / Coppia nominale Starting torque/Rated torque	2,8			Msp/Mn
19	Classe d'isolamento / Insulation class	F			
20	Grado di protezione / Enclosure	IP55			
21	Posizione scatola morsetti (motore con piedini) Terminal box position (motor with feet)	A			
22	Terminali potenza / Power leads terminal	M6			
23	Peso / Weight	47			[kg]
24	Cuscinetti /bearings	Drive end	6308		
		Non drive end	6308		
<b>Note/remarks:</b> Targa con logo Coltri Compressors.					

		SPECIFICA TECNICA MOTORE EL. Electric motor technical data sheet		Potenza/ Power (kW)	Poli/ Poles
				11	2
		Data 24/06/2015		Rev. 0	
No	Descrizione/Description	Dati/Data			U.d.m.
1	Codice Soga / ref. code	124545			
2	Modello / Motor type	MT1 132MC/2			
3	Descrizione / Description	Three-phase asynchronous motor 11kW 2 Poles 400/690V 50Hz			
4	Carcassa motore / Framesize	132M			
5	Poli / Poles	2			
6	Forma di costruzione / Mounting type	IM B3			
7	Potenza nominale / Rated output	11	11	13	[kW]
8	Fattore di servizio / Service factor	1,0			
9	Tipo di servizio / Duty type	S3-75%			
10	Tensione / Rated voltage	400/690	400/690	Δ 440-480	[V]
11	Frequenza / Rated frequency	50	60	60	[Hz]
12	Corrente nominale / Rated current	23/13,3	23/13,3	23	[A]
13	Velocità nominale / Rated speed	2910	3500	3500	[min <sup>-1</sup> ]
14	Fattore di potenza / Power factor	0,87	0,91	0,87	
15	Coppia nominale motore / Rated motor torque	36	30	35,5	[Nm]
17	Corrente avviamento / Corrente nominale Starting current / Rated current	6,8			Isp/In
18	Coppia avviamento / Coppia nominale Starting torque/Rated torque	2,7			Msp/Mn
19	Classe d'isolamento / Insulation class	F			
20	Grado di protezione / Enclosure	IP55			
21	Posizione scatola morsetti (motore con piedini) Terminal box position (motor with feet)	A			
22	Terminali potenza / Power leads terminal	M6			
23	Peso / Weight	52			[kg]
24	Cuscinetti /bearings	Drive end	6308		
		Non drive end	6308		
<b>Note/remarks:</b> Targa con logo Coltri Compressors.					

Data sheet three-phase electric motor 15 kW

		SPECIFICA TECNICA MOTORE EL. Electric motor technical data sheet		Potenza/ Power (kW)	Poli/ Poles
				15	2
		Data 25/06/2015		Rev. 0	
No	Descrizione/Description	Dati/Data			U.d.m.
1	Codice Soga / ref. code	150791			
2	Modello / Motor type	MT1 132MD/2			
3	Descrizione / Description	Three-phase asynchronous motor 15kW 2 Poles 400/690V 50Hz			
4	Carcassa motore / Framesize	132M			
5	Poli / Poles	2			
6	Forma di costruzione / Mounting type	IM B3			
7	Potenza nominale / Rated output	15	15	18	[kW]
8	Fattore di servizio / Service factor	1,0			
9	Tipo di servizio / Duty type	S3-75%			
10	Tensione / Rated voltage	400/690	400/690	440-480Y	[V]
11	Frequenza / Rated frequency	50	60	60	[Hz]
12	Corrente nominale / Rated current	31/17,9	31/17,9	31	[A]
13	Velocità nominale / Rated speed	2920	3500	3500	[min <sup>-1</sup> ]
14	Fattore di potenza / Power factor	0,86	0,91	0,86	
15	Coppia nominale motore / Rated motor torque	49	41	49,1	[Nm]
17	Corrente avviamento / Corrente nominale Starting current / Rated current	7,2			Isp/In
18	Coppia avviamento / Coppia nominale Starting torque/Rated torque	2,5			Msp/Mn
19	Classe d'isolamento / Insulation class	F			
20	Grado di protezione / Enclosure	IP55			
21	Posizione scatola morsetti (motore con piedini) Terminal box position (motor with feet)	A			
22	Terminali potenza / Power leads terminal	M6			
23	Peso / Weight	59			[kg]
24	Cuscinetti /bearings	Drive end	6308		
		Non drive end	6308		
<b>Note/remarks:</b> Targa con logo Coltri Compressors.					

# Aerotecnica Coltri S.p.A.

Via dei Colli Storici, 177  
25015 Desenzano del Garda  
Brescia - Italy

Ph. +39 030 9910301  
+39 030 9910297

[info@coltri.com](mailto:info@coltri.com)

DT-TDS-CNGHD-22-V3



[coltri.com](http://coltri.com)



**COLTRI**  
THE ITALIAN COMPRESSOR